



Made in RILHEVA

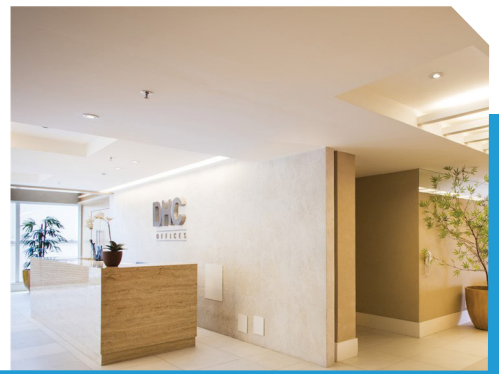
A real
Internet
of Things
story



DHC
OFFICES

TEKNOGEA

RILHEVA
IIoT Platform



*Rilheva has proven to be the **winning choice**: it's **easy to use and to install** and thanks to this, we were able to keep the level of the water tanks **under control and in real time** with the consequent **decrease in consumption (-25%)**, along with obtaining more **awareness of data** resulting in **cost savings** for the **benefit of the environment**.*



M. Ceconi | TI manager for smart metering, partner at **TEKNOGEA IIOT**

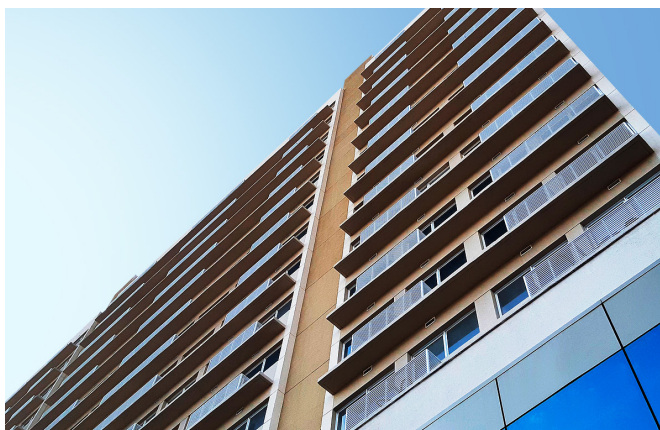
The company

The **DHC Offices** (www.dhcoffices.com.br) is a commercial condominium covering an area of over 4,000 m² in the city of Rio de Janeiro, located in the Pineros district.

Like most Brazilian buildings, the condominium, which consists of 440 offices, has a **water reserve system in reinforced concrete tanks located on the roof** which supplies both **utilities** and the **fire protection system**.

Goals and challenges

Given that costs are extremely high in the state of Rio, our goal was **to individualize water consumption** and **limit possible leaks** in addition **to monitoring the level of the tanks** in order to allow for prompt maintenance in case of lack of water, thanks to **smartphone warning alarms and notifications**.



Rilheva solves

The Rilheva IIoT platform with the addition of its **APP** was a winning choice: in a **simple and reliable** way it was possible to solve critical issues encountered.

The system went into operation very quickly: it was no longer necessary to visually detect the consumption of the 440 hydrometers and the maintenance group was always **able to keep the level of the tanks under control and in real time** by reading the hydrometers in **LoRaWAN**.

Why would you recommend it?

Rilheva IIoT Platform is easy to use and to install, **no code or software needs to be written**, and from the start, it has guaranteed the double advantage of **controlling water consumption** by both the condominium's administration and by single condominiums.

In addition to **reducing the intervention times** needed on the plant, the monitoring has also led to a **significant decrease in consumption (-25%)** along with more **awareness of the data** resulting in **cost savings** for the benefit of the environment.



LoRaWAN[®]



ROUTER 4G

