

The logo for RILHEVA PLATFORM. It features the word "RILHEVA" in a bold, sans-serif font, with a white swoosh underline that starts under the 'R' and ends under the 'A'. Below "RILHEVA" is the word "PLATFORM" in a smaller, all-caps, sans-serif font.

RILHEVA  
PLATFORM

The future of remote control gets simple

The Xeo4 logo, featuring the word "Xeo4" in a stylized, italicized font. The 'X' is red and has a white outline, while the 'eo4' is red. The logo is positioned in the bottom right corner of the page.

Xeo4

Everything is under control.

even what you don't see







WATER AND GAS  
NETWORK

**It's like to be there.  
Even if you're not.**

As soon as something has changed, Rilheva knows it. And you're the first to be informed.

Xeo4 design ad technology expression, Rilheva gathers all your hardware data and it transmits them to a control and monitoring server, through a platform integrating hardware, software ad services.

Rilheva is the future of remote control for:

- **Production of energy from renewable sources**  
(hydroelectric, wind, biogas, photovoltaic)
- **Water integrated cycle management**  
(pumping stations, treatment plants, wells, tanks, levels, flow, automation, water balances)
- **Industrial plants**  
(machinery, facilities, production lines)
- **Energy management**  
(energy analysis and business intelligence)
- **Remote-reading consumption of distribution plants**  
(power lines, pipelines, aqueducts)
- **Industrial chiller management**  
predictive analysis and efficiency index
- **Monitoring of environmental parameters**  
(weather stations, agricultural meteorology solutions, analysis of air or water quality, river or basin levels)





## Don't worry, there's Rilheva

The most innovative Rilheva service is called Tranquillity.

Imagine a remote control station network.

Imagine a huge quantity of hardware data, encoded and transmitted to a server through an IP network (GPRS, Ethernet, Wi-Fi, 3G). Now stop imaging.

The fact is that Rilheva allows to access information you need, when you need it, in the easiest way, via app or browser.

The platform grants:

- **complete independence:** service can be activated with any IP network and with all providers.
- **simplicity of the plant:** Rilheva grants contemporary monitoring of all points from a single control center.
- **protection and security:** gathered info from remote stations stored in Xeo4 servers, protected by multiple levels of passwords that allow access with SSL technology only to authorized users.

- **"modular" philosophy:**

we provide optional expansion modules to meet different needs.

- **cost reduction:**

Rilheva grants an "always-on" monitoring with much lower costs than traditional methods of data transmission.

- **communication efficiency:**

Rilheva architecture keeps a permanent, two-way, simultaneous connection between central server and remote stations.





**It doesn't speak, it acts.**

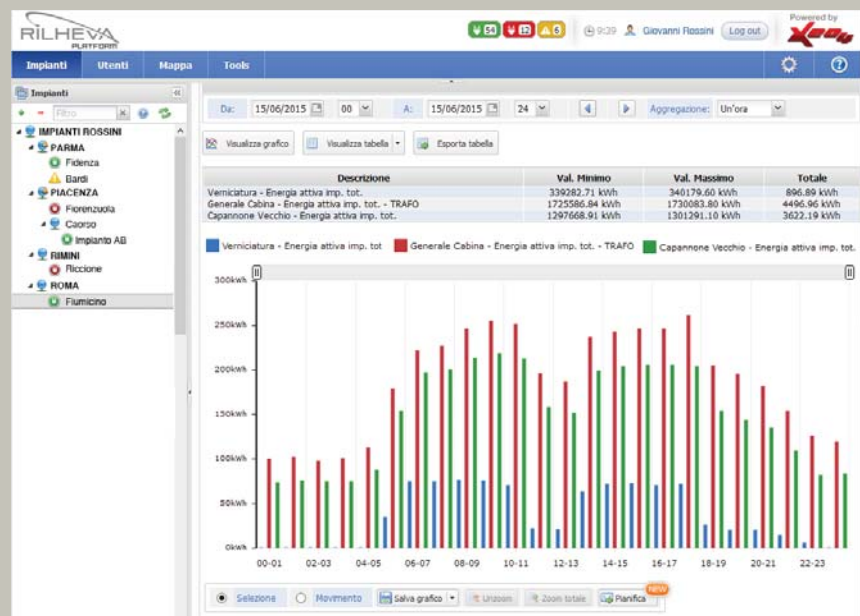
Rilheva is not limited to the management and monitoring of remote control, but it can directly take action to solve the issue.

Three levels of action

- **"continuous" monitoring:** collection and automatic archiving of data, transmitted with the frequency that you will set.
- **"warning" mode:** when the event exceeds an established "threshold" the system instantly sends a series of alerts to the recipients you choose (via email, sms, speech, fax, push notifications).

- **"remote" intervention:** if necessary, operator can act remotely on the different devices, to solve the problem without intervening in the field.

From the operation center the gradual improvement of the situation can be measured in real time.





CHILLER



RENEWABLES



ENVIRONMENT



INDUSTRY



WATER AND GAS NETWORK



RILHEVA II



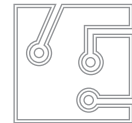
RILHEVA GPRS



EECHO XL



ROUTER 3G



YOUR HARDWARE







## Rilheva solution advantages

### Communication

- “always-on” GPRS/3G technology, independent from telephone operator
- traditional connections via Ethernet or Wi-Fi.
- transmission costs very low compared to a fixed connection or GSM
- installation time and maintenance reduced to a minimum, superior flexibility

### Hardware

- loan for use to relieve the customer from the costs of obsolescence and replacement in case of failure
- all-in-one: in a compact industrial box it integrates GPRS modem, I / O, communication ports
- easily transferable from one measuring point to another
- usable on a large scale in large areas without a significant increase in costs
- simple and modular, for a rational and deferred investment in time

- remote stations can be configured depending on the number of I / O and the communication mode
- remote stations firmware update from server via the Internet
- possibility to use third-party hardware

### Software

- resident on Xeo4 server and usable with a reduced service fee
- based on the most common web technologies
- stores data on relational DataBase
- reliable and easy to use and in consultation
- it allows to display data and their processing (KPI)
- creates statistics or figures “trend” for the prediction of danger or alarm
- It analyzes the situations of alarm and activates the reporting procedures to staff-on-call
- Use of the software differs according to service contract type
- integration with systems

already installed, customizable for specific needs

- data access simply by logging Internet with a standard browser using a PC or APP on smartphone or tablet
- scalable and expandable, independent from the number of users and the number of remote stations installed

### Services

- feasibility study
- requirements analysis
- writing of functional specifications
- services implementation
- staff training
- post-sales technical assistance

The initial study, implementation, training, and assistance accompany users in all phases of the project, ensuring the success. A “turnkey” solution to speed up the “time to market” of our customers. Everything is under control, even what you don’t see.



Via Asti, 5 - 29121 Piacenza  
Tel. 0523 498721 - Fax 0523 401738  
[www.xeo4.it](http://www.xeo4.it) - [info@xeo4.it](mailto:info@xeo4.it)